

DEKO TV

DIGITAL TV RECEIVER

DVB-T2 HEVC

DVB-C

PRO & PRO 2

Remote Controller

POWER	Tuner On/Off.
TV CONTROL	Group of five buttons for programming TV IR buttons
MUTE	Switching sound muting on and off.
AUDIO	Change soundtrack language.
SUBT	Selecting subtitles when watching films.
TTX	Switching the teletext on and off.
FORMAT	Change the aspect ratio.
TV/RADIO	Change to TV or Radio channels.
FAV	Turn on the favorites channels function.
MENU	Go to the decoder settings.
EXIT	Close the mode / menu.
OK/LIST	Confirm selected functions. List all TV channels.
V+ / V-	Change volume.
CH+ / CH-	Switch channels.
EPG	Electronic program guide.
INFO	Program detailed information and channel parameters.
PVR	Direct access to the directory with recorded material using the "REC" function.
REC	Start the recording function.
MEDIA BUTTONS	Colored function keys (red, green, yellow, blue). They are used to navigate and activate functions in the tuner's submenus. Functions will be displayed on the screen as prompts.
RED	Play / pause and TIME SHIFT - scroll through the displayed content.
GREEN	Stop playback or recording.
YELLOW	Fast rewind.
BLUE	Fast forward.
1 - 9	Channel number buttons.
RECALL	Switch to previous channel.
PLAN	Switch on "Recording schedule". - works in the TV function.



MEMORY function - controlling the TV set from the DEKO TV remote control

With the supplied MEMORY remote control, you can operate both the DEKO TV decoder and the TV set to which it is connected with one remote control.

Instructions for programming the buttons in the "TV Control" section of the DEKO TV remote control:

1. Press and hold the "SET" button for approx. 2 seconds until the red button lights up brighter. The remote control will enter button pairing mode.



Hold down the SET button on the Deko TV remote control

2. On the DEKO TV remote control, press once the button from the TV Control section that you want to program, such as Power. The LED will start flashing slowly, indicating that it is listening for IR commands.



Select a button for pairing, e.g. Power.

3. Align the remote controls with the LEDs facing each other at a maximum distance of 3 cm and press the button on the external remote control that you want to store in the DEKO TV remote control - e.g. Power. The red LED will flash three times to indicate that the function of the button has been correctly stored.



Align the remote controls with the LEDs facing each other and press the button to be saved, e.g. Power

4. Press the "SET" button on the DEKO TV remote control to complete the pairing mode.



Press the SET button to complete the pairing process.

You can now use the DEKO TV remote control to turn your TV on and off, for example. Start the process again to assign the remaining buttons.

NOTE!

The "SET" button is not programmable. Any 5 buttons from another remote control can be programmed, regardless of their function.

Hardware interface

Installation manual

RF IN port: connect an antenna cable for DVB-C or DVB-T2 signals

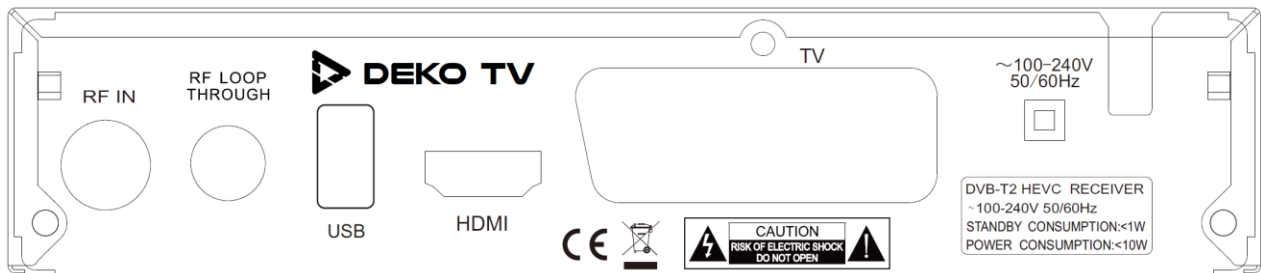
RF LOOP: connect output cable for DVB-C or DVB-T2 signals (optional)

USB port: insert a USB drive, hard disk drive, WiFi USB module

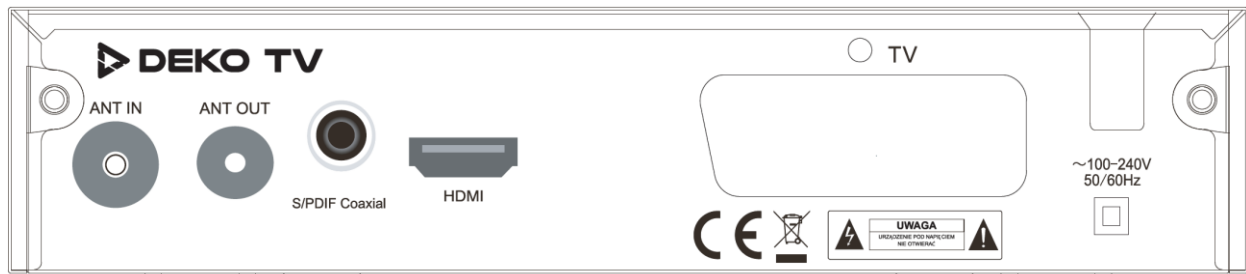
HDMI output: connect the HDMI port of the TV set using an HDMI cable

SCART output: connect the SCART port of the TV set (in case of lack of HDMI port in TV)

DEKO TV PRO 2



DEKO TV PRO



Installation

By default, when there is no TV or radio channels, tuner displays installation start screen. Press the CONTROL KEY [▲ / ▼] to move the motion cursor. Move the cursor to **Channel Search** and press [OK] to start the automatic channel search.



Select:

- **OSD Language** to change your default language
- **Country** to change country settings
- **FTA Only** to select only Free To Air channels
- **Search Mode** to change DVB-T/T2 or DVB-C
- **Antenna Power** if your antenna requires additional power supply
- **Channel Search** to start searching for channels

Automatic search for free DVB-T2 HEVC terrestrial TV channels will start.



Main menu

Press the [MENU] key to enter the Main Menu.

Press the [◀/▶] or [▲ / ▼] key to move the cursor to the desired settings and then the [OK] key to confirm. To exit the settings to the previous Menu, press the [EXIT] key.



Channel Search

The default search settings will search for all available DVB-T2 HEVC digital terrestrial TV channels. To set your own channel numbering, described below, the LCN setting should be disabled (Off).



Channel Edit

Press [OK] on the large screen to display the channel list, then press [YELLOW BUTTON] on the remote control or in the Main Menu, move the cursor to the channel edit bar and press [OK].



Channel edition

Channel delete

Press [1] Del on the screen to enter the channel delete mode.

Move the cursor to the desired channel and press [OK]. To carry out multi-channel deletion, you can select more than one channel, and those channels that are marked with a delete sign will be deleted when you press [RED] from the Media Section of the Deko TV remote control.



Move channels

Press the [2] Move button on the screen to enter move mode.

The selected channel will have a move marker, press [GREEN BUTTON] to select multiple channels, now move the channels to the selected position and then press [OK]. To set the list of channels in your own order, disable the LCN setting first.



Skip Channels

Press the [3] Skip button on the screen to enter the channel skip setting mode. Select the channel to skip by pressing [OK]. Channels set to skip will not appear in the stored channel list.



Channel lock

Press the [4] Lock button on the screen to enter channel lock mode.

To access this section you need to enter the decoder password, which is set to 000000 by default, which can be changed in the Decoder Menu. Select the channels to be locked and press [OK].

When a channel is locked, you will be prompted to enter the password each time.

Only when the correct password is entered can the channel be played.



Add a favorite group

Press the [5] Fav button on the screen to enter add favorite channels. Move the cursor to the channel to be added to the favorite groups. Press the [OK] key to confirm. The same channel can be added to different favorite groups.

Press the [EXIT] key to exit the favorite groups category field. Channels that are added to a favorite group will have a flag of favorites.



EPG Program Guide

Press the EPG shortcut to enter the program guide.

Press [OK] to display the EPG information of the channel.

In the EPG menu, press [▲ / ▼] to switch the current program if the current program contains EPG information.

Press the [▶] key to move the cursor to the EPG Display Window of the respective program to get more information about the program.



EPG information for the following days: [GREEN BUTTON] - the day before [YELLOW BUTTON] - the day after.

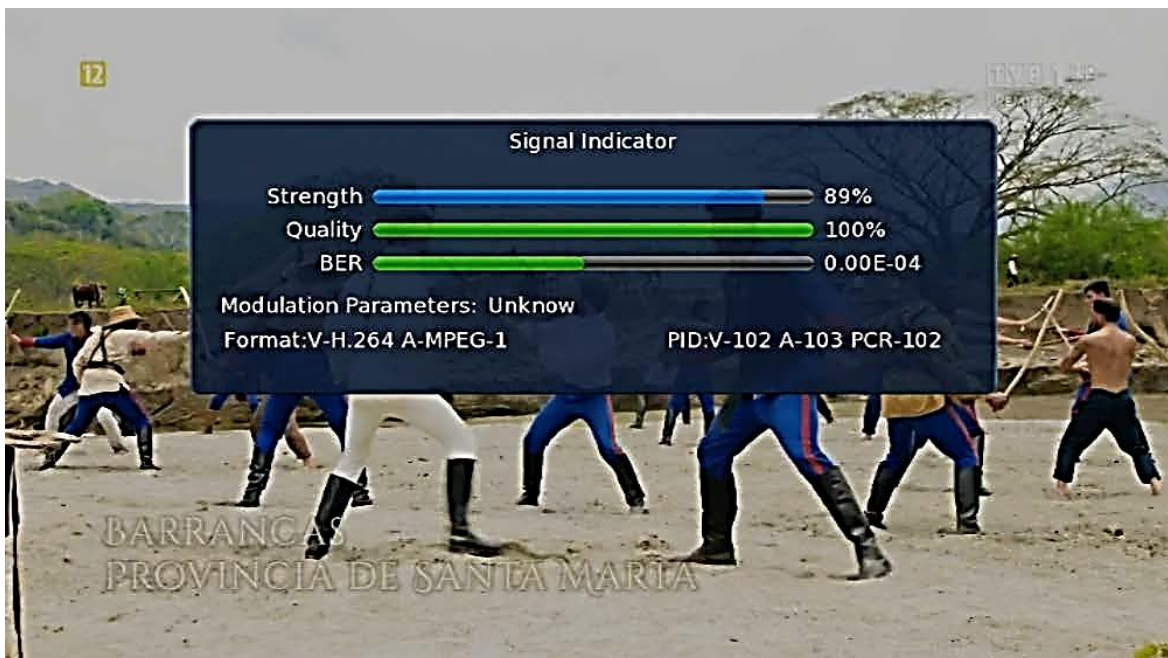


EPG information for a particular program can also be displayed using the [INFO] key on the remote control while watching a program.

Double-clicking the [INFO] key will display the full description of the program.



Pressing the [INFO] key three times will display the transmission parameters and reception strength of the channel in question.



Settings menu

Main settings of the decoder



Language

Set the language for the decoder menu, the language for the two audio tracks, the language for the on-screen subtitles while watching, the language for the teletext and the EPG.



AV Settings

TV Standard - Resolution

Select the optimum (native) resolution for your receiver. The default setting is 1080i@50Hz (FHD@50Hz).



OSD Settings

Select the transparency of the Menu on the TV channel.

Specify the time after which the Menu with program description is to be switched off. Select how you want to switch channels.



Lock control.

Enable and disable channel locking by password.

Change the current password 000000 to a sequence of numbers of your choice. Press [OK] to change the individual options.



Time setting.

Select automatic mode for setting the time from the sender.

Set the time zone and summer time on and off.



PVR Management.

Enable or disable the TIMESHIFT function for recording live programs. The TIMESHIFT function is activated on the remote control with the [RED] button.

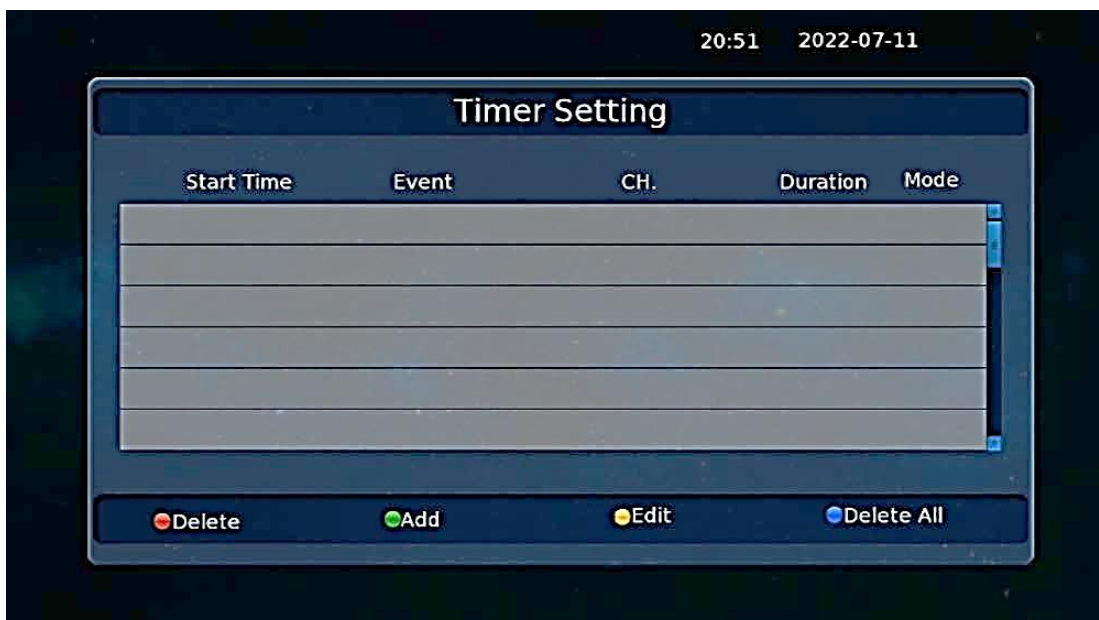


Timer settings.

Selecting the signal output parameter when connecting the decoder to the TV set using the type connector. Schedule the recording of the selected program.

Press [GREEN] to add an item to be recorded.

Set the On Mode to automatically start the decoder at the set date and time.

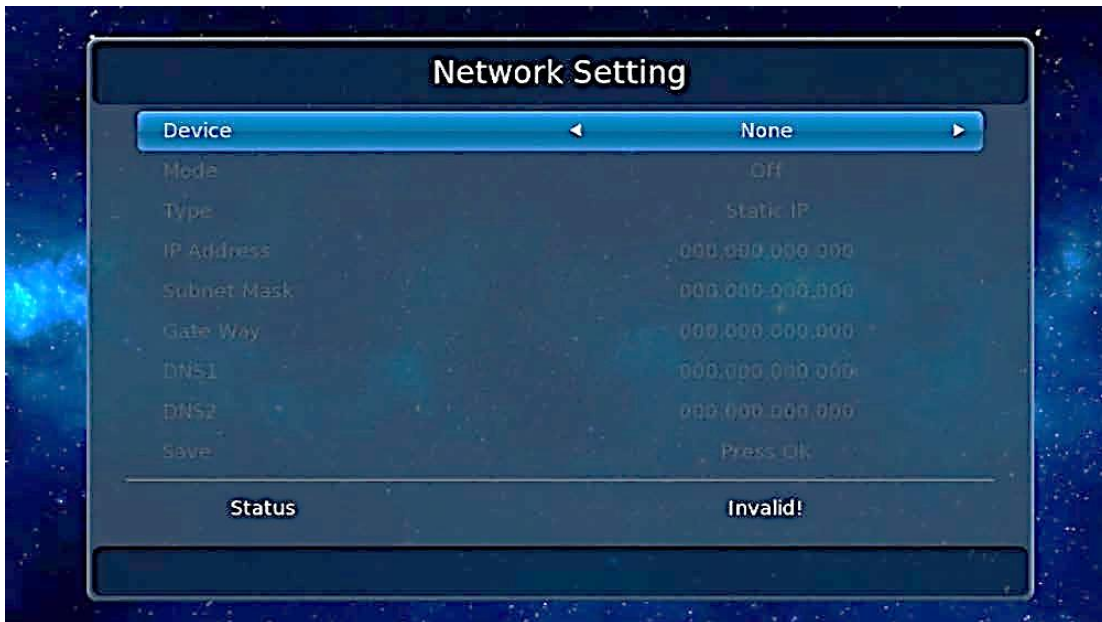




Network settings.

Set the On Mode to automatically start the decoder at the set date and time. When entering the You will need an additional Wi-Fi adapter to connect your device to the network, which plugs into the decoder's USB.

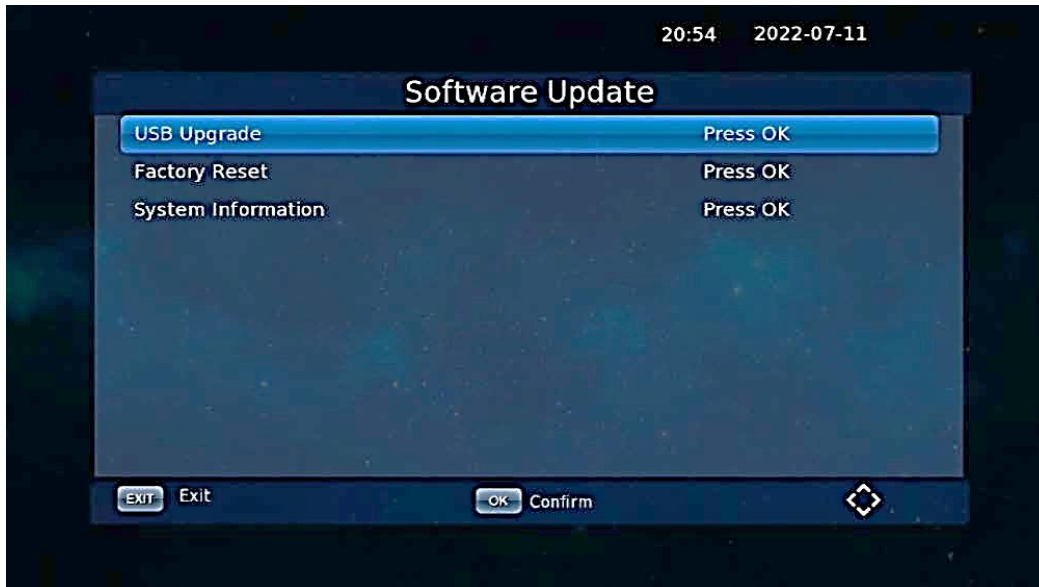
The USB Deko TV Wi-Fi antenna is not included and is available for separate purchase.



Software update.

Download software update file

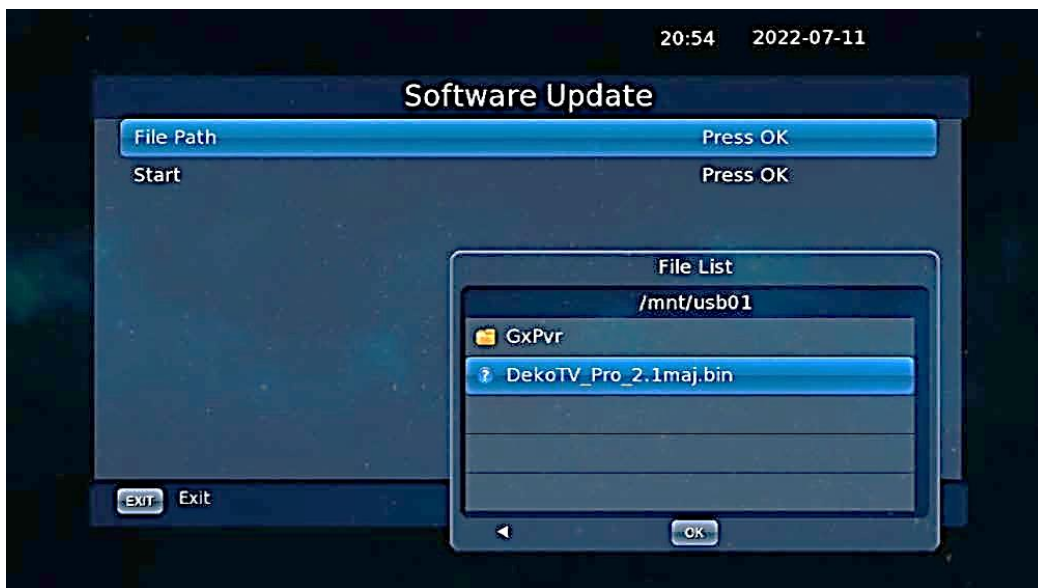
The latest software update files can be found at www.dekoelectronics.com in the "Downloads" tab. Detailed step-by-step instructions for updating the software can also be found there.



Uploading software to your decoder

Select Software Update from the Main Menu and press [OK].
Select USB update and indicate the path to the software file on the memory stick, then click [OK] to start the update process.

CAUTION:
Do not unplug the decoder during the update process.



NOTE:
With latest Software, the decoder can be also updated via Internet, directly with the Decoder Menu.

IPTV

Internet TV

Detailed instructions on how to add additional free-to-air channels are available for download at www.dekoelectronics.com



Adding channels

When the cursor is in the left half of the screen, press [RED] to refresh the list and [GREEN] to display the list of IPTV clouds.

IPTV channels can be added, deleted, edited and imported.

[BLUE] means to enter the iptv server address in the .XML file.

In local IPTV mode, first navigate to the XML file for IPTV and press [BLUE] then select the location of the file and press [OK] to import it.

Once the data has been successfully imported you will see the channel groups and channel list, Use [▲ / ▼] for navigation.

WARANTY

The warranty period is 24 months from the date of sale (according to the date on the proof of purchase and the warranty card). The territorial scope of warranty protection covers the whole territory of European Union.

(2) Acceptance of the product for warranty repair is conditional on the Purchaser presenting to the Seller:

- a valid proof of purchase (receipt, simplified bill, VA T invoice).
- the defective product.

The service may refuse to carry out the warranty repair if the data contained in the above documents are inconsistent.

(3) The warranty card should be stamped by the dealer and signed by the dealer. A warranty card filled out incorrectly or illegibly is invalid.

(4) The warranty covers only defects caused by reasons inherent in the product sold. 5 The warranty does not cover:

- any defect arising from improper use of the product, in particular non-compliance with the instructions for use or safety regulations;
- mechanical damage to the product and defects caused to it;
- any defects resulting from repairs carried out by unauthorised parties (including the Purchaser);
- damage or malfunctions caused by improper installation of equipment working with the product;
- parts and accessories subject to normal wear and tear during use, in particular scratches, hard-to-remove stains, worn-out lettering, batteries, etc.
- operations mentioned in the user's manual which are intended to be carried out by the user;
- damage caused by fortuitous events, such as fire, flood, power surges, electrical discharges; flooding, chemical agents and other external influences, such as corrosion or stains;
- products in which the warranty seal has been removed or broken.

The guarantee covers products used exclusively for non-business purposes. Products used for commercial purposes are not covered by the warranty.

(7) If the Service finds that the product has been used for commercial, industrial or professional purposes, the warranty will always be limited to the replacement of spare parts. The declarant will bear the labour costs and the duration of the product warranty (excluding consumable parts) will not change. The duration of the product warranty for consumable parts will be reduced to three months.

(8) The warranty covers free replacement of spare parts needed for repair and labour during the warranty period. Defects revealed during the warranty period may be repaired only by DEKO Electronics Authorised Service.

9) Service, commercial firm that sold the product and DEKO Electronics, are not responsible for the timeliness of warranty repair, if the repair cannot be performed due to import/export restrictions on spare parts or other legal regulations and other circumstances beyond the control of the indicated entities.

10. it is recommended to send the product in its original factory packaging. In the event of damage in transit, the repair process will not be initiated.

(11) In the event of a defect, the customer may lodge a complaint at the place of purchase.

The customer has the right to exchange the equipment for a new one if the DEKO Electronics Service Centre states in writing that the removal of the defect is impossible. The equipment to be replaced should be complete. In case of incomplete equipment, the cost of the missing equipment shall be borne by the Purchaser. 13.

Any activities carried out by service points (in the case of a functional product) consisting in: checking of operation, measurement of technical parameters, cleaning, adjustment, tuning are chargeable activities.

14. mechanical damage is not covered by the warranty, even if the dealer accepts mechanically damaged equipment for complaint handling. DEKO TV as a guarantor, regardless of the opinions of intermediaries, does not give warranty for mechanically damaged equipment.

(15) In case of loss of the warranty card no replacement or duplicate document will be issued and repair and claims under this warranty will be void.

(16) The warranty for the goods sold does not exclude, limit or suspend the Purchaser's rights arising from the non-conformity of the goods with the contract.

(17) In matters not covered by these terms and conditions, the provisions of the Civil Code shall apply.

Safety and operational recommendations

ATTENTION !

READ THIS USER MANUAL CAREFULLY AND FOLLOW ITS INSTRUCTIONS. REMEMBER NOT FOLLOWING THE INSTRUCTIONS VIOLATES YOUR RIGHT TO WARRANTY CLAIMS.

Please read this user manual carefully to use the equipment correctly. Please keep this manual to be able to use the instructions and guidance contained therein also in the future. Should you need to repair the equipment, please contact an authorised service centre.

WARNING !

OPENING THE HOUSING MAY RESULT IN ELECTRIC SHOCK.

Do not, under threat of electric shock, remove the housing or back cover from the device. Even when the device is switched off, dangerously high voltages may occur inside the housing. There are no parts inside that the user can replace or repair himself. If damage is found, repairs may only be carried out by an authorised service centre. The power cord may only be replaced by a specialist service workshop. Protect batteries and devices with batteries installed from excessive heat from the sun, fire, etc.

WARNING !

To avoid the danger of fire or electric shock, the equipment must not be exposed to water (e.g. rain) and must be protected from moisture. Do not place the equipment in locations where it may be splashed (e.g. near bathrooms, saunas) or place objects containing liquids (e.g. vases) on the player.

ATTENTION !

Ventilation openings must not be blocked. Install in accordance with the manufacturer's recommendations. The openings in the housing have been made for ventilation, proper operation and protection against overheating. These openings must not be obstructed by placing the appliance on a bed, sofa, carpet or similar surface. The appliance must not be placed in a built-in surface, e.g. book shelves or cupboards, unless proper ventilation is provided or the manufacturer's recommendations have been followed.

REPAIRS

All servicing must be carried out by a service centre. If the unit has been dropped, the power-supply cord has been damaged, liquid has gotten into the unit, the unit has been exposed to rain, does not operate normally, or a noticeable degradation in sound quality has occurred.

DISPOSAL OF WORN OUT ELECTRICAL AND ELECTRONIC EQUIPMENT

This symbol on the product or its packaging means that the product should not be included in household waste and must not be disposed of with other household waste. Polish law prohibits, under penalty of a fine, combining used electrical and electronic equipment with other waste. It should be handed over to an appropriate point that collects and recycles electrical and electronic equipment. By ensuring that the product is disposed of properly, you can prevent the potential negative consequences for the environment and human health that could result from inappropriate handling of waste from used electronic equipment. Recycling of materials helps to conserve natural resources.



For detailed information about recycling this product, please contact your local authority, your cleaning service provider or the shop where you purchased this product.

CE

This logo indicates that the receiver complies with the conditions of Directive 2004/108/EC on compliance of Member States with electromagnetic compatibility regulations and with the conditions of Directive 2006/95/EC on compliance of Member States with low-voltage regulations and safety related to the handling of electrical equipment.



Location

The device should stand on a flat, stable surface, away from other electronic devices such as video players, radio receivers or loudspeakers, from which electromagnetic interference may affect the quality of the reproduced image and sound. When placing the receiver in a lockable rack, we must ensure that there is free space around it, guaranteeing proper ventilation, and in a place with low humidity, away from the sun and other sources of heat. Protect the unit from flooding.

Power supply

If the player is not going to be used for a long time, unplug it from the mains socket. To switch off the cord, grasp the plug, do not pull on the cord itself. Do not touch the power cord or the AC adapter with wet hands. There is a risk of electric shock. Please only use the power supply recommended by the device manufacturer and supplied with the device. Do not place the AC adapter in an enclosed space such as a bookcase or AV cabinet. Protect the unit from dropping and shock.

Lightning

For greater safety during storms and before leaving the device for long periods of time, unplug the device from the mains socket. This will avoid damage caused by storms and power surges.

Cleaning

Clean the housing and controls with a soft cloth dampened with a solution of mild detergent. Do not use any type of cloth or scouring powder, or solvents such as spirit or petrol.

Batteries

Remove the batteries from the remote control if they are worn out or if the remote control will not be used for a long time. Use only new batteries. Do not use partially used batteries from different manufacturers, combine old batteries with new ones, etc. Batteries contain harmful chemicals and should therefore be disposed of properly. Batteries must not be charged, short-circuited, heated or placed in a fire. Do not drop the remote control as there is a risk of damage to the remote control or leakage. If you find leakage or leaking batteries, remove the damaged batteries immediately to protect the remote control from damage, and then clean the remote control of any electrolyte residue and possible corrosion. Battery life is usually around 1 year, with battery life depending on a number of factors, including the intensity of use.